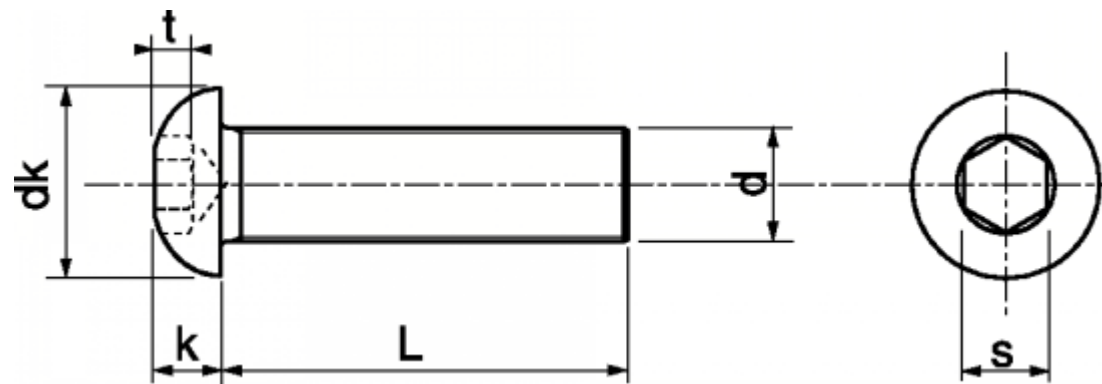


Socket Button Head Screws

ISO 7380

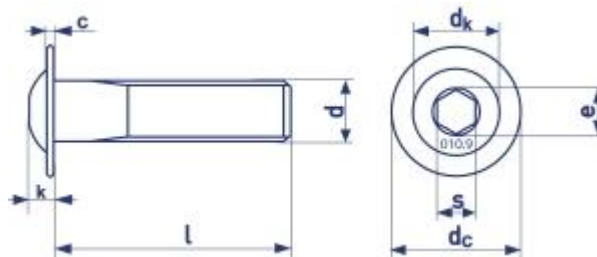


d	M2.5	M3	M4	M5	M6	M8	M10	M12	M16
t	0.85	1.04	1.3	1.56	2.08	2.6	3.12	4.16	5.2
k - Max.	1.4	1.65	2.2	2.75	3.3	4.4	5.5	6.6	8.8
s	1.5	2	2.5	3	4	5	6	8	10
dk	4.4	5.7	7.6	9.5	10.5	14	17.5	21	28
L	LENGTH OF SCREW								

Socket Button Head Screws, also known as **Dome Screws**, feature a widely used hexagon drive.

Socket Button Head Screws are low-profile, and for safety and aesthetics their rounded head features no sharp or point edges.

Socket Flange Button Head Screws ISO 7380-2



d	M3	M4	M5	M6	M8	M10	M12
dk	5.2	7.2	8.8	10	13.2	16.5	19.4
dc	6.9	9.4	11.8	13.6	17.8	21.9	26
c - min	0.55	0.65	0.8	1	1.25	1.7	2.1
k - max	1.65	2.2	2.75	3.3	4.4	5.5	6.6
t - min	1.04	1.3	1.56	2.08	2.6	3.12	4.16
e - min	2.3	2.88	3.44	4.83	5.72	6.86	9.15
s	2	2.5	3	4	5	6	8
L	LENGTH OF SCREW						

Socket Flange Button Head Screws, which feature a built-in washer, the wide flange keeps the screw head from crushing thin or soft materials.

Tel: 01234 346242
www.challenge-europe.co.uk
sales@challenge-europe.co.uk