

# DUBO Toothed Collar Ring

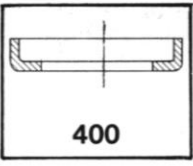
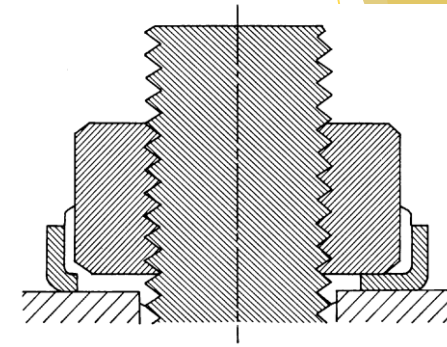
The DUBO-toothed collar ring is a unique addition to the DUBO-retaining ring, and is intended for use in combination with high quality steel nuts (8.8). It will now be possible to admit any desired bolt tension without damaging the DUBO-retaining ring on account of high bolt and nut loads, this design permits the use of any nut as a locking nut, which can be re-used. By putting the DUBO-retaining ring into this toothed-collar ring, optimum deformation of the DUBO-ring is obtained after tightening the nut. The deformation of the DUBO-ring causes the locking and tightening effect according to the DUBO principle.

At the spots where the teeth have been provided, the DUBO-retaining ring is perforated under high pressure and after complete deformation, constitutes unity between toothed collar ring and nut. When the situation is obtained, the nut to be locked has come into contact with the steel teeth.

From this moment on, every desired bolt pressure can be admitted; in fact a partly rigid connection between steel and steel and nylon is obtained. Due to the fact that the DUBO-ring is compressed under high pressure between the teeth of the collar ring, a constant elastic action is obtained.

## Advantages:-

- The DUBO Retaining Ring can take up any desired bolt pressure, such as for bolts 8.8 and 10.9 and lock these bolts against loosening;
- It is possible to make a locking nut out of any nut;
- It can be re-used many times;
- The locking material lies under the nut: thus damping, tightening, locking at constant bolt pressure
- High friction coefficient due to the combination of steel dents and DUBO-retaining ring;
- Nylon DUBO-retaining ring can be used now with higher temperatures ( $\pm 180^{\circ}\text{C}$ );
- Metallic contact (electrical purposes) is obtained in cases where it is required;
- Excellent lockwasher for tap-bolts.



**DUBO-toothed collar rings can only be used in conjunction with DUBO-retaining rings.**

***Patented throughout the world.  
Increases the application for  
screws from 8.8.***



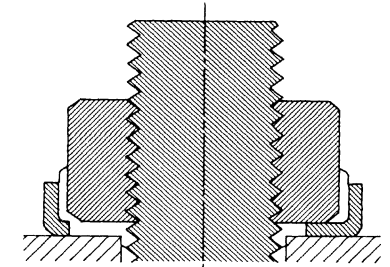
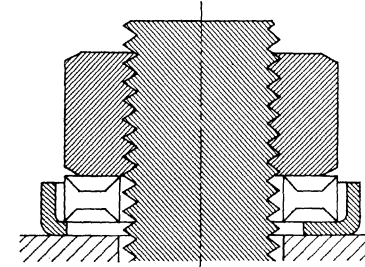
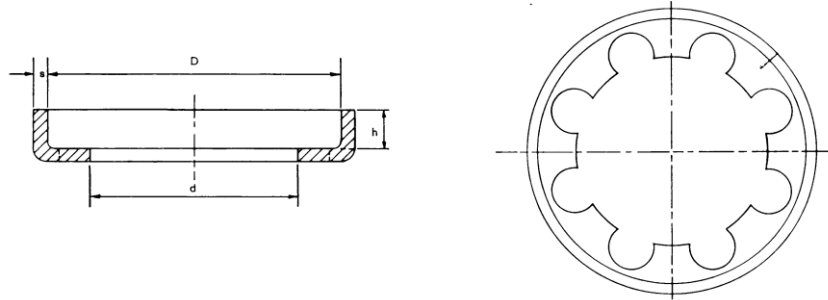
**Tel: 01234 346242**  
**[www.challenge-europe.co.uk](http://www.challenge-europe.co.uk)**  
**[sales@challenge-europe.co.uk](mailto:sales@challenge-europe.co.uk)**



# DUBO Toothed Collar Ring

## Dimensions:

(Dimensions in mm)



Part No.	Dimensions for:				D	d	h	s	Weight kg/1000
	Hexagon head screws		Socket head screws						
	metric threads	inch threads	metric threads	inch threads					
404	M 4 M 5	5/32" 3/16"	M 6	1/4"	11.20	6.80	2.50	0.65	0.69
406	M 6	1/4"			13.20	9.00	3.40	0.75	1.05
407	M 7		M 8	5/16"	15.50	10.50	3.60	0.75	1.75
408	M 8	5/16"	M 10	3/8"	17.20	12.00	3.80	1	2.37
410	M 10	3/8"	M 12	1/2"	21.30	13.50	4.20	1.5	5.56
412	M 12	7/16"	M 14		24.50	15.50	4.50	1.5	6.85
414	M 14	1/2"	M 16	5/8"	27.00	17.50	4.80	1.5	7.90
416	M 16		M 18		31.25	21.00	5.00	1.75	12.80
417		5/8"	M 20		33.00	23.00	5.00	1.75	13.35
418	M 18 M20		M 22	7/8"	37.50	26.00	5.50	1.75	15.50
419		3/4"	M 24		39.50	27.00	5.50	1.85	16.80
422	M 22 M 24	7/8"			44.00	30.50	6.00	2	23.30
427	M 27	1" 1.1/16"			50.50	35.00	7.00	2	31.50
430	M 30	1.1/8"			56.00	40.00	7.50	2.5	48.75
433	M 33	1.1/4"			61.00	45.00	8.00	2.5	55.00
436	M 36	1.3/8"			67.00	50.00	8.30	2.75	63.00

**MATERIAL:** Steel (in conformity with DIN 17100), also available in Stainless Steel A4



Tel: 01234 346242  
[www.challenge-europe.co.uk](http://www.challenge-europe.co.uk)  
[sales@challenge-europe.co.uk](mailto:sales@challenge-europe.co.uk)